



**NSW
Resources
Regulator**

MONTHLY BUSINESS ACTIVITIES REPORT

July 2021



Document control

Published by NSW Resources Regulator

Title: Monthly business activities report – July 2021

First published: August 2021 (data current at 3 August 2021)

Authorised by: Executive Director NSW Resources Regulator

CM9 reference: DOC21/686190

AMENDMENT SCHEDULE

Date	Version	Amendment

© State of New South Wales through Regional NSW 2021. You may copy, distribute, display, download and otherwise freely deal with this publication for any purpose, provided that you attribute Regional NSW as the owner. However, you must obtain permission if you wish to charge others for access to the publication (other than at cost); include the publication in advertising or a product for sale; modify the publication; or republish the publication on a website. You may freely link to the publication on a departmental website.

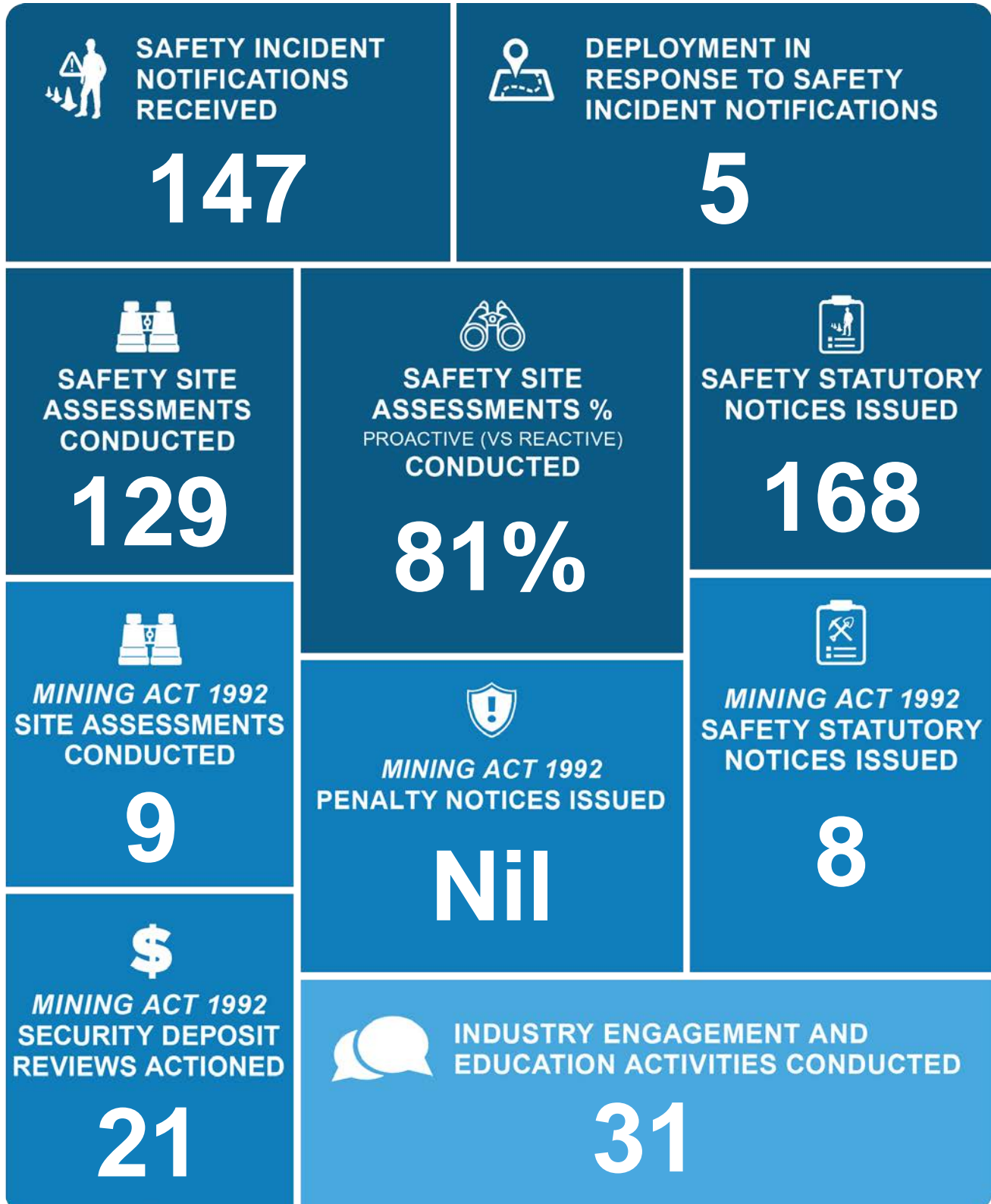
Disclaimer: The information contained in this publication is based on knowledge and understanding at the time of writing (July 2021) and may not be accurate, current or complete. The State of New South Wales (including Regional NSW), the author and the publisher take no responsibility, and will accept no liability, for the accuracy, currency, reliability or correctness of any information included in the document (including material provided by third parties). Readers should make their own inquiries and rely on their own advice when making decisions related to material contained in this publication.

Contents

- Activities at a glance 4
- Key activities 5
- Work Health and Safety activities 6
 - Safety incident notifications 6
 - Targeted assessment program 7
 - Safety compliance – prohibition notices 8
 - Mining authorisation activities 9
- Mining Act 1992* regulatory activities..... 11
 - Statutory notices issued..... 11
- Industry engagement activities 12
 - Committees and other industry body involvement..... 12
 - Publication and alerts 12

Activities at a glance

Summary of our regulatory activities in July 2021



Key activities

The NSW Resources Regulator published the following investigation and safety bulletins:

- an [investigation report](#) and related incident [animation video](#) following a fatal incident at Snapper Minerals Sands Mine in August 2019
- five weekly [incident summaries](#) highlighting nine dangerous incidents
- targeted intervention program [report](#) on assessment of lead risk at metalliferous mines and
- consolidated [report](#) on planned inspection program for air quality or dust or other airborne contaminants – open cut coal.

Other publications included:

- key [compliance priorities](#) for the Resources Regulator for July – December 2019
- guidance material on new standard rehabilitation conditions on mining leases including [guidelines](#), [fact sheet](#), and [frequently asked questions](#) and
- information regarding Resources Regulator joining expanded Mining Exploration and Geoscience group.

For more activities refer to [Mine Safety News](#) and [Mine Rehabilitation News](#).

Work Health and Safety activities

Safety incident notifications

DETAILS OF SAFETY INCIDENTS WHERE INSPECTORS WERE DEPLOYED

DATE NOTIFIED	REPORTING SECTOR	PRINCIPAL MINING HAZARD	INCIDENT
17 July	Coal mines	Surface vehicle interaction - Roads and Vehicle other operating areas	A surface cart operator did not effectively communicate with drill rig operator while positioning the service cart in front of the drill rig. The drill rig arm subsequently contacted the handrail and windscreen of the service cart
19 July	Large mines – Metalliferous and Quarries	N/A	An increase in rainfall has reduced the factor of Safety in Tailings Storage Facility based on piezometer results
20 July	Coal mines	Fire and Explosion - Surface	A haul truck became engulfed in flames. The operator exited the truck without injury and water cart suppression was able to douse the flames.
23 July	Coal mines	Loss of control of lifted load or load lifting equipment	An EWP that was being maneuvered off a tilt tray and has tipped over the LHS of the tilt tray.
25 July	Coal Mines	Surface vehicle interaction - Roads and Vehicle other operating areas	The watercart left its bay and entered into the travel path of a haul truck. Contact was made on the offside of the haul truck and the onside position and ladder of the watercart.

TOTAL

5

Targeted assessment program

DETAILS OF TARGETED SAFETY SITE ASSESSMENTS

HAZARD	SECTOR	MINE
Air quality or dust or other airborne contaminants	Coal - Surface	Wilpinjong Coal Mine
Entanglement	Large Mines - Underground	Rasp Mine, Southern Operations
Explosives	Coal - Surface	Mount Pleasant Operation - Thiess Pty Ltd
Explosives	Large Mines - Underground	Cadia East UG, Tomingley Gold Mine
Fire or explosion	Large Mines - Underground	Northparkes Mines
Ground or strata failure	Coal - Surface	Bulga Surface Operations, Mount Thorley Warkworth Operations, Mt Arthur South (Thiess Pty Ltd)
Ground or strata failure	Coal - Underground	Narrabri Colliery
Other – Structural Collapse	Coal - Surface	Moolarben Coal Operations - Coal Handling and Preparation Plant
TOTAL		12

Safety compliance – prohibition notices

Prohibition notices issued this month under section 195 of the *Work Health and Safety Act 2011*.

PROHIBITION NOTICES ISSUED

ISSUED TO PCBU*	MINE LOCATION	PROHIBITED ACTIVITY
Broken Hill Operations Pty Ltd	Rasp Mine	Routine Revenue Metering Accuracy Checks on energised electrical equipment without conducting a site-specific risk assessment.
Newcrest Mining Limited	Cadia East UG	Persons entered an exclusion zone installed around an area effected by a seismic event.
Dendrobium Coal Pty Ltd	Dendrobium Colliery	Workers prohibited from going underground until retrained in mine response to underground fire.
Dendrobium Coal Pty Ltd	Dendrobium Colliery	Using a butane torch to remove fibres from conveyor structure.
CMOC Mining Pty Limited	Northparkes Mines	Wheeled vehicles restricted from entering TSF decant construction area.
Ravensworth Operations Pty Ltd	Ravensworth Operations	Refueling and servicing of mobile plant by service truck.
Young Mining Co Pty Ltd	Thuddungra Mine	Access into the first floor area of the ore sorting shed.
Hillgrove Mines Pty Ltd	Hillgrove Mines	Use of non-explosion protected equipment within areas defined as hazardous zones.
Alchemy Pastoral Projects Pty Ltd	Willow Vale	The fixed sand plant and associated conveyor systems on site are not to be operated for production purposes.
Hanson Construction Materials Pty Ltd	Hanson Moama Sands	No person to proceed beyond the door of the identified Caterpillar 740 articulated dump truck, unless it is to enter or exit the cabin. No access to back deck of Hyundai long stick Excavator.
CMOC Mining Pty Limited	Northparkes Mines	Persons not to enter the exclusion zone of the western embankment of TSF2.
TOTAL		11

Mining authorisation activities

The status of applications requesting exemption from specific provisions of the Work Health and Safety (Mines and Petroleum Sites) Regulation 2014 are listed in the table below.

EXEMPTION APPLICATIONS REFUSED

MINE	REGULATION PROVISIONS EXEMPTED
Newstan Colliery	Exemption application no longer required as condition on Quarry Manager Practising Certificate has been satisfied
TOTAL	1

HIGH RISK ACTIVITY NOTIFICATIONS RECEIVED

MINE	LEGISLATION*	TYPE OF NOTIFICATION	NO.
Dendrobium Colliery	WHS(MPS) Reg Sch 3 cl 10	Sealing (other than emergency sealing), but only if notice has not been given as part of a notice for secondary extraction	1
Mandalong Mine	WHS(MPS) Reg Sch 3 cl 16(1)(a)	Secondary extraction by longwall mining, shortwall mining or miniwall mining	1
Dendrobium Colliery	WHS(MPS) Reg Sch 3 cl 7(2)(b)	Working in inrush control zone - potential source of inrush cannot be inspected	1
PPL0004 Menangle Park 15	WHS(MPS) Reg Sch 3 cl 32	Decommissioning a well	1
PPL0004 Menangle Park 17	WHS(MPS) Reg Sch 3 cl 32	Decommissioning a well	1
Airly Colliery	WHS(MPS) Reg Sch 3 cl 16(1)(a)	Secondary extraction by longwall mining, shortwall mining or miniwall mining	1
Airly Colliery	WHS(MPS) Reg Sch 3 cl 14	Using electrical plant or cables in a hazardous zone	1
Tahmoor Colliery	WHS(MPS) Reg Sch 3 cl 15	The formation of a pillar other than a conforming pillar	1
PPL0004 Glenlee 8	WHS(MPS) Reg Sch 3 cl 32	Decommissioning a well	1

MINE	LEGISLATION*	TYPE OF NOTIFICATION	NO.
Liddell Coal Operations	WHS(MPS) Reg Sch 3 cl 35	The establishment, operation, alteration or decommissioning of a tailings storage facility	1
Mt Owen Coal Handling and Preparation Plant	WHS(MPS) Reg Sch 3 cl 27	The establishment, operation, alteration or decommissioning of an emplacement area	1
Tahmoor Colliery	WHS(MPS) Reg Sch 3 cl 15	The formation of a pillar other than a conforming pillar	1
Cadia East UG	WHS(MPS) Reg Sch 3 cl 2	Electrical work on energised electrical equipment	1
TOTAL			13

*Work Health and Safety (Mines and Petroleum Sites) Regulation 2014

Mining Act 1992 regulatory activities

Statutory notices issued

NOTICES OF DIRECTIONS ISSUED DETAILS

ISSUED TO	LOCATION	SUMMARY S.240 OF THE MINING ACT 1992 DIRECTION
Tomingley Gold Operations Pty Ltd	Tomingley Gold Mine	Engage a suitably qualified expert(s) to undertake an assessment of long term erosional stability and the long term geotechnical stability including pit walls that will remain as part of the current approved final rehabilitated landform. Prepare and submit a report providing details of above assessments.
Cadia Holdings Pty Ltd	Cadia Valley Operations	Engage a suitably qualified expert to undertake an assessment of the long term erosional stability of the Waste Rock Emplacements (WRE) that have been constructed as part of the rehabilitation of the mine. Engage a suitably qualified expert to undertake an assessment of the surface water management structures located in the rehabilitated landforms across the WRE's. Prepare and submit a report providing details of above assessments.
Copeton Diamond Mines Pty Ltd	Copeton Diamand Mine (Mount Ross)	Revise the Rehabilitation Cost Estimate (RCE) for the authorisations in accordance with the <i>Rehabilitation Cost Estimate Guidelines</i> (June 2017) and submit the RCE electronically to the Resources Regulator.
RZ Resources Limited	EL 8648 (1992) EL 8311 (1992) EL 8312 (1992) EL 8385 (1992) EL 8560 (1992)	Provide a separate shapefile (point data) for each exploration licence and provide a detailed report for all access tracks created by RZRL for each activity approval issued. Each access track identified by RZRL is to have a unique identifier.
Hillgrove Mines	Hillgrove Mines Pty Ltd	Prepare and submit an updated Rehabilitation Cost Estimate (RCE) in accordance with the <i>Rehabilitation Cost Estimate Guidelines</i> (June 2017) and submit the RCE electronically to the Resources Regulator.
TOTAL		8

Industry engagement activities

Committees and other industry body involvement

COMMITTEES AND OTHER INDUSTRY BODY INVOLVEMENT

COMMITTEE / BODY	DETAIL
Upper Hunter Economic Diversification Working Group	Quarterly meeting
Combined Newcastle & Lake Macquarie LGA LEMCs	COVID update for all agencies
Standards Association	ME 18-02-03 committee for AS 3637 Winding Equipment - Revision of existing AS 3637 series to be combined into consolidated standard for suspension equipment
Total	3

Publication and alerts

MEDIA RELEASES, SAFETY BULLETINS AND PUBLICATIONS

TYPE	NUMBER
Guidance material	11
Investigation information release	1
Investigation report	1
Media release / news item	1
Mine rehabilitation news	2
Mine safety news	2
Rehabilitation information release	1
Reports	4
Video	1
Weekly incident summary	4
Grand Total	28