

Mine safety performance overview 2020 - 2021



Fatal injuries **↑↑ 2** INCREASE OF 1 IN 2020-21 FROM 1 IN 2019-20

Death of miner at opal mine

On 14 October 2020, an opal miner suffered fatal injuries while working at an underground opal mine. The miner was investigating a fault with the mine's material hoist on the surface of the mine. A short time later the miner was found unresponsive in the sump of the hoist shaft, approximately seven metres beneath the surface. The injuries sustained by the miner are consistent with a fall from height. The cause of the fall has not been determined.

See [Investigation Information Release IIR20-12](#) for more information.

Worker struck by light vehicle at quarry

On 24 May 2021, a worker suffered fatal injuries after being struck by a light vehicle. The worker was kneeling down to retrieve dropped items from the ground, when the driver of the light vehicle performed a left-hand U-turn. The driver did not see the worker and the front passenger side of the vehicle struck the worker.

See [Investigation Information Release IIR21-07](#) for more information.



Serious injuries **↑↑ 117** INCREASE OF 11 IN 2020-21 FROM 106 IN 2019-20

Overall increases were observed in serious injuries caused by fractures and wounds, lacerations and amputations to the trunk or chest and hands, fingers and wrists. Refer to the main report for a detailed analysis of serious injuries and illnesses including bodily location, nature, mechanism and employment type since 2018-19.



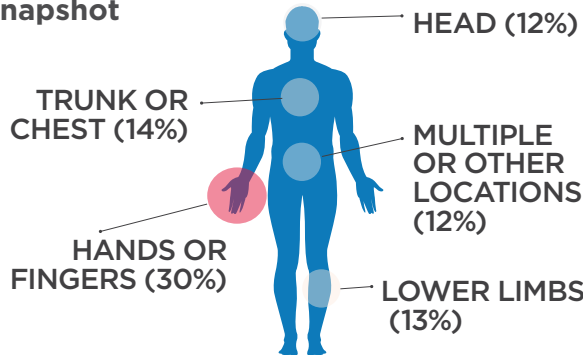
Fatal and serious injuries

Fatal and serious injuries snapshot

MECHANISM

Being hit by moving objects **(61%)**

Falls, trips and slips of a person **(29%)**



NATURE OF INJURY

Fractures **(45%)**

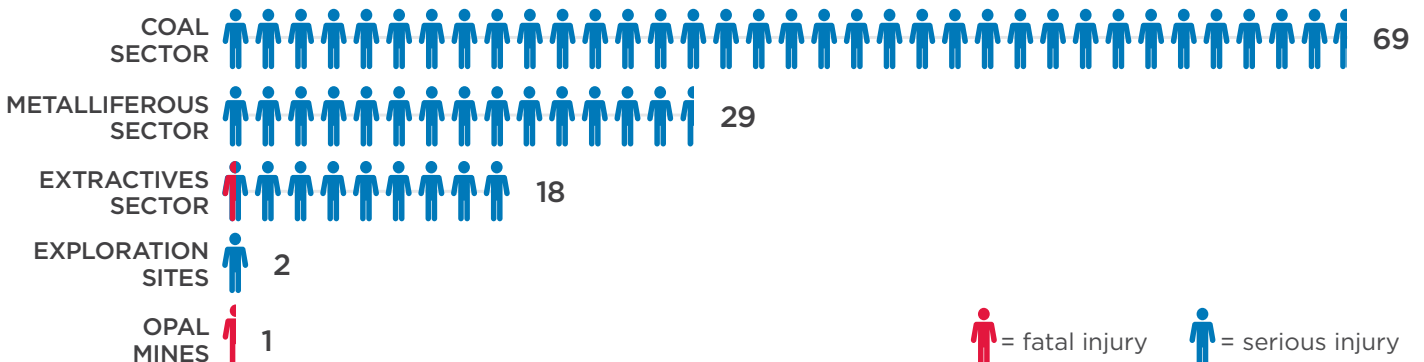
Wounds, lacerations, amputations and internal organ damage **(35%)**

*Represents 89% of the total

*Represents 81% of the total

*Represents 80% of the total

Fatal and serious injuries by sector (one person = 2 injuries)



LTIs LOST TIME INJURIES

↑↑ 290 INCREASE OF 17 IN 2020-21 FROM 273 IN 2019-20



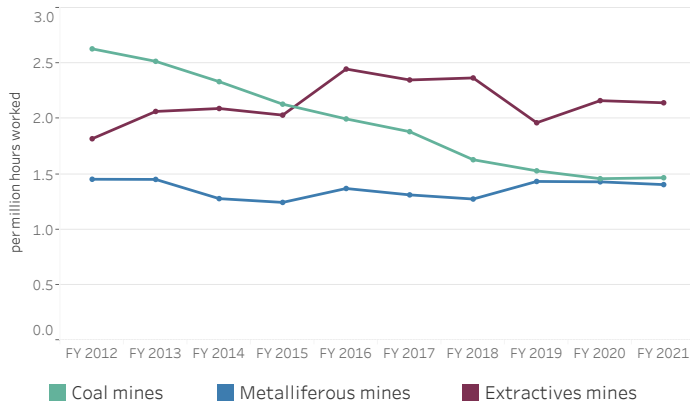
TRIs TOTAL RECORDABLE INJURIES

↑↑ 864 INCREASE OF 42 IN 2020-21 FROM 822 IN 2019-20

Mine safety performance overview 2020 - 2021

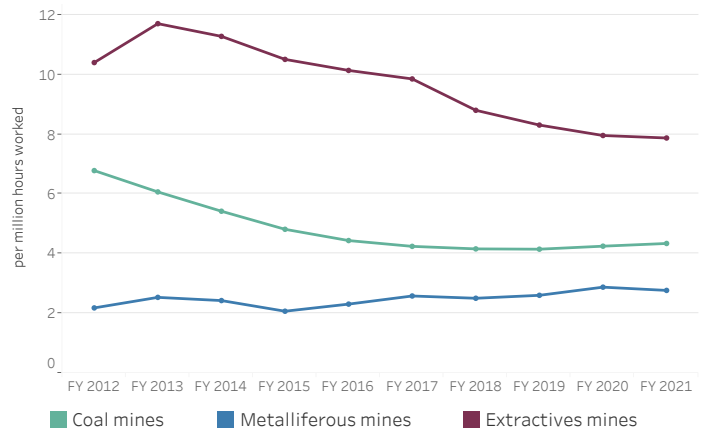
SIFR

Five year average serious injury frequency rate



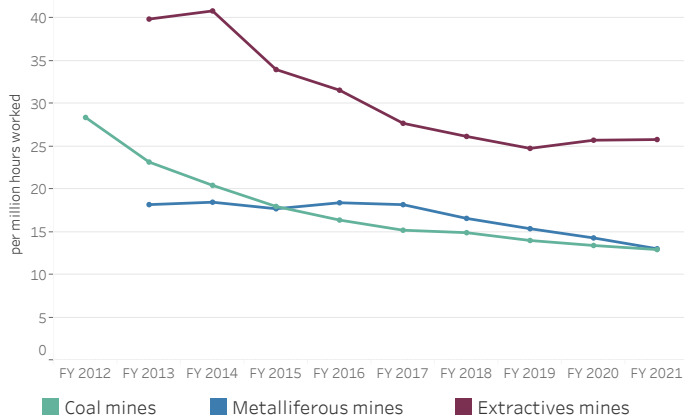
LTIFR

Five year average lost time injury frequency rate



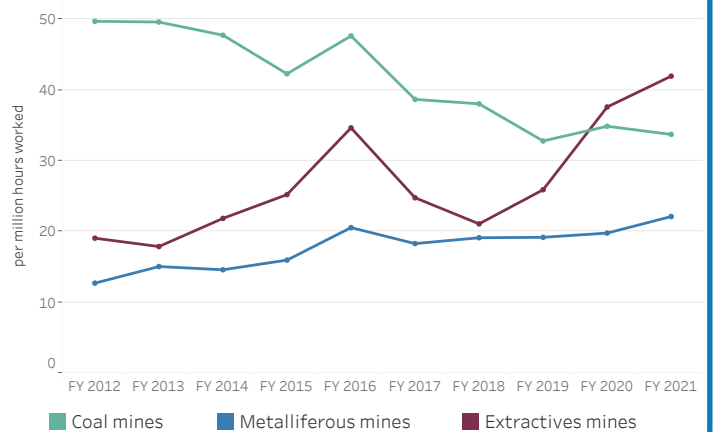
TRIFR

Five year average total recordable injury frequency rate



INFR

Annual incident notification frequency rate

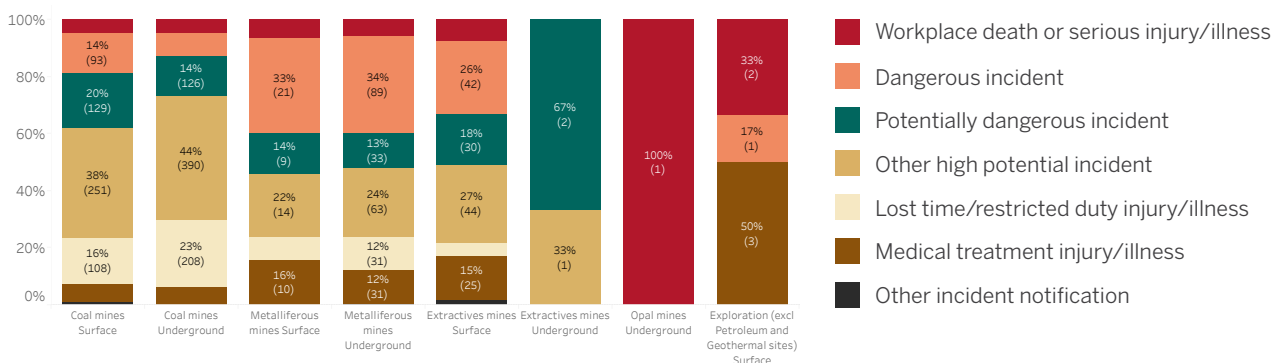


Incidents

2,049

DECREASE OF 93 IN 2020-21 FROM 2,142 IN 2019-20

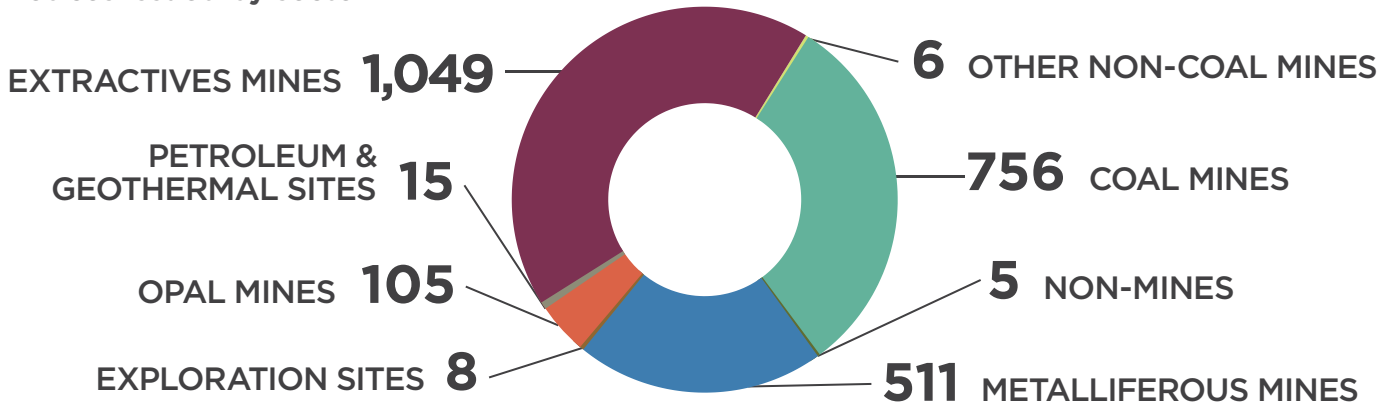
Incident notification profile 2020-21



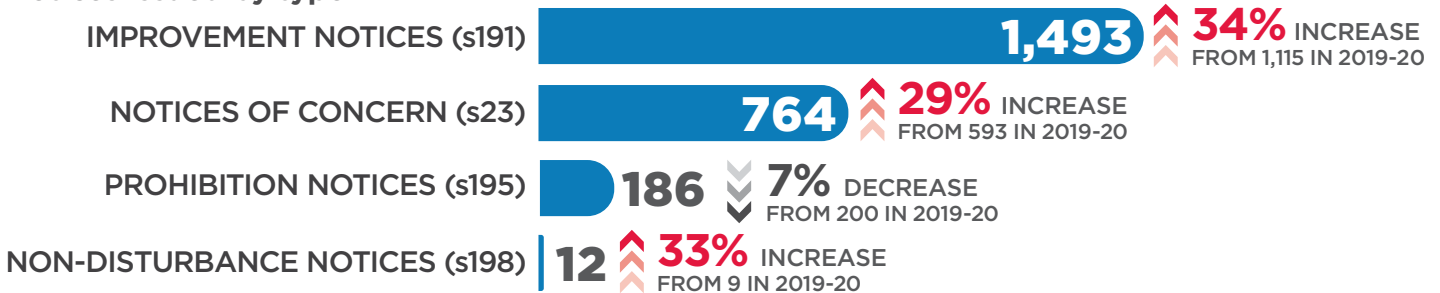
Mine safety performance overview 2020 - 2021

Notices issued **2,455** INCREASE OF 538 IN 2020-21 FROM 1,917 IN 2019-20

Notices issued by sector

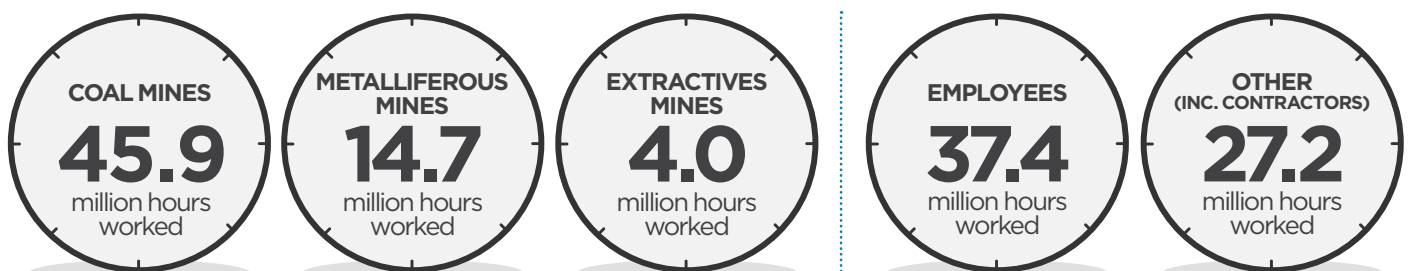


Notices issued by type



Hours worked **64.7m** DECREASE OF 2.6m IN 2020-21 FROM 67.3m IN 2019-20

Total hours worked in 2020-21



For more information

This overview was first published in November 2021 with data current at October 2021.

To read the full [Mine Safety Performance Report for 2020 - 2021](#), and other safety publications, visit our [website](#).

© State of New South Wales through Regional NSW 2021. You may copy, distribute, display, download and otherwise freely deal with this publication for any purpose, provided that you attribute Regional NSW as the owner. However, you must obtain permission if you wish to charge others for access to the publication (other than at cost); include the publication in advertising or a product for sale; modify the publication; or republish the publication on a website. You may freely link to the publication on a departmental website. Disclaimer: The information contained in this publication is based on knowledge and understanding at the time of writing (December 2021) and may not be accurate, current or complete. The State of New South Wales (including Regional NSW), the author and the publisher take no responsibility, and will accept no liability, for the accuracy, currency, reliability or correctness of any information included in the document (including material provided by third parties). Readers should make their own inquiries and rely on their own advice when making decisions related to material contained in this publication. DOC21/911782-2

