

WEEKLY INCIDENT SUMMARY

Week ending Friday 1 April 2022


This incident summary provides information on reportable incidents and safety advice for the NSW mining industry. To report an incident to the NSW Resources Regulator: phone 1300 814 609 24 hours a day, 7 days a week.

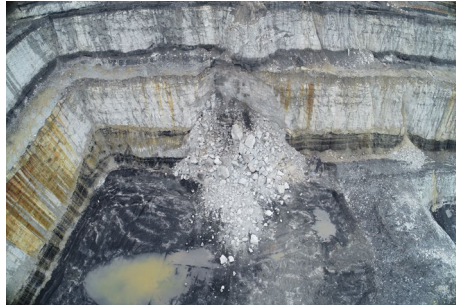
At a glance

High level summary of emerging trends and our recommendations to operators.

TYPE	NUMBER
Reportable incident total	36
Summarised incident total	2

Summarised incidents

INCIDENT TYPE	SUMMARY	COMMENTS TO INDUSTRY
Dangerous incident IncNot0041908 Open cut coal Ground or strata 	A highwall failed and material breached the exclusion control zone in a known geotechnical hazard area. A grader was operating in the area at the time. The operator felt a vibration, noticed dust and quickly drove away from the highwall. The worker was clear of the falling material.	Recent highwall failures in NSW mines have resulted in material overwhelming catchment bunds and exclusion zones. Mine operators should ensure an adequate exclusion zone is established based upon the maximum reasonable potential of a failure occurring, including the potential for a failure to extend through to adjacent jointing/faults. Mine operators should also ensure water egress is minimised to highwall crests to reduce the potential of a failure occurring.



Dangerous incident
IncNot0041937
Open cut coal
Ground or strata



A dump truck was tipping a load when the ground failed, causing the rear of the truck to sink. The operator was assisted from the truck without injury.



Tip heads and dumps must have suitable inspection regimes in place. Changes in conditions, such as wet weather, should trigger a change in inspection frequency.

Design of dumps and catch bunds should consider areas where water can accumulate.

When dumping near bodies of water or mud, strict controls should be implemented based on robust risk assessment processes.

Refer to:
[Safety Bulletin: SB20-01 Failure of highwalls, low walls and dumps.](#)

Resources Regulator publications

- [Safety Bulletin SB22-05 Crane incidents on the rise](#)

Other publications of interest

The incidents are included for your review. The NSW Resources Regulator does not endorse the findings or recommendations of these incidents. It is your legal duty to exercise due diligence to ensure the business complies with its work health and safety obligations.

PUBLICATION	ISSUE/TOPIC
	International (other, non-fatal)
NZ MinEx	Fire on front end loader <p>A fire started suddenly in the engine of a frontend loader at a quarry. Several extinguishers were used in an attempt to put the fire out, but ultimately the fire brigade extinguished it. Fire damage made it impossible to ascertain the exact cause, however there were signs of a bird's nest beside the intercooler pipe. The fire was concentrated around the fuel water separator and could have resulted from fuel or hydraulic leaks. None had been reported prior to the incident. It is possible electrical wiring had rubbed through and shorted out, however fire damage destroyed most of the engine harness therefore it was impossible to identify the exact location where the fire started.</p> <p>Details</p>
	National (other, non-fatal)
WorkSafe Qld	Electrical arc flash <p>An innovative new film produced by the Electrical Safety Office highlights the serious dangers of electrical arc flashes. Head of the Electrical Safety Office Donna Heelan said arc flash incidents are far too common in Queensland's electrical industry and it was time to beef up the warnings. An arc flash is a release of electrical energy that causes an explosion which can reach temperatures of up to 20,000 degrees Celsius. An arc flash usually occurs in large switchboards but can also occur in smaller switchboards, electricity supply pillars or large electrical equipment.</p> <p>Details</p>

Note: While the majority of incidents are reported and recorded within a week of the event, some are notified outside this time period. The incidents in this report therefore have not necessarily occurred in a one-week period. All newly recorded incidents, whatever the incident date, are reviewed by the Chief Inspector and senior staff each week. For more comprehensive statistical data refer to our annual performance measures reports.

© State of New South Wales through Regional NSW 2022 You may copy, distribute, display, download and otherwise freely deal with this publication for any purpose, provided that you attribute Regional NSW as the owner. However, you must obtain permission if you wish to charge others for access to the publication (other than at cost); include the publication in advertising or a product for sale; modify the publication; or republish the publication on a website. You may freely link to the publication on a departmental website.

Disclaimer: The information contained in this publication is based on knowledge and understanding at the time of writing (April 2022) and may not be accurate, current or complete. The State of New South Wales (including Regional NSW), the author and the publisher take no responsibility, and will accept no liability, for the accuracy, currency, reliability or correctness of any information included in the document (including material provided by third parties). Readers should make their own inquiries and rely on their own advice when making decisions related to material contained in this publication.

DOCUMENT CONTROL

CM9 reference	RDOC22/45218
----------------------	--------------

Mine safety reference	ISR22/13
------------------------------	----------

Date published	8 April 2022
-----------------------	--------------

Approved by	Deputy Chief Inspector Office of the Chief Inspector
--------------------	---