

December 2023

Preparing for your core library visit

MinView

Online search and discovery

Preparation is the key to making the most of your visit to a Geological Survey of NSW (GSNW) core library, and MinView is a great tool to help you make the most of your time. It provides useful context for samples you want to examine and insights into what to look out for during your visit.

MinView is a free web mapping application that allows you to view, search and download a comprehensive range of geoscientific data for NSW. MinView also provides access to a range of supporting reference data, including current and historic exploration and mining titles, areas available for exploration, and cadastral information.

You can find MinView at: minview.geoscience.nsw.gov.au

Datasets available

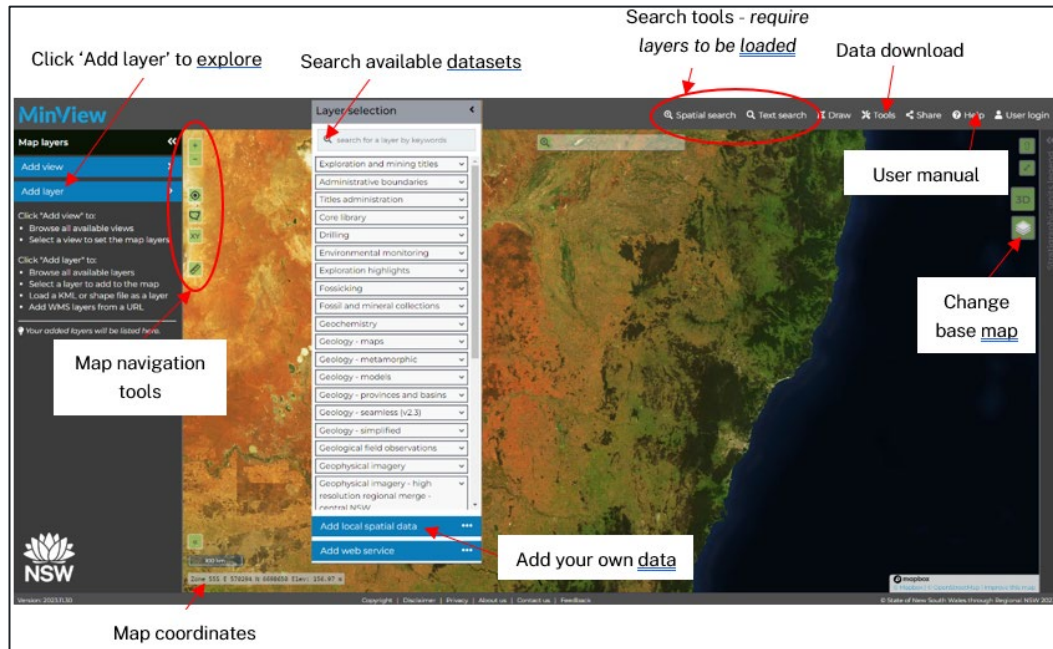
- Geological mapping data
 - Geological basins and provinces
 - Mineral occurrences
 - Drillhole locations and related sample information
 - Location of drillcore stored at the core library
 - Surface sample locations and geochemistry
 - Geological observations and measurements – including stratigraphical and lithological descriptions, and structural and petrophysical measurements
 - Geochronological data
 - Statewide geophysical imagery – including total magnetic intensity, gravity and radioelement.
-

MinView features

- Search for information in your area of interest
 - Conduct spatial and text searches on map layer attributes
 - Create custom views with data you use often
 - Upload your own data using zipped shapefiles or KML
-

- Add your own labels or graphics to a map
- Share your custom maps by email or print
- Download data for the whole of NSW or clip to an area
- Register for notification of changes to exploration and mining title datasets.

Basic functionality of MinView



Tips for users

- MinView opens as a blank canvas showing the default Digital Globe satellite imagery base map. You can then explore the available data layers by clicking **Add layer** to load layers to the map. Layers can also be searched by using keywords at the top of the layer panel.
- To perform a search for data, the relevant layer must be loaded into the map. Search tools are on top right menu bar and you have the option of either doing a spatial search for an area of interest or a text search based on relevant information
- There are over 350 layers available in MinView, organised into a hierarchical structure based on the content of the datasets. The geoscientific and titles layers are listed in the top half of the layer panel and the reference layers in the lower half.

Finding drilling information

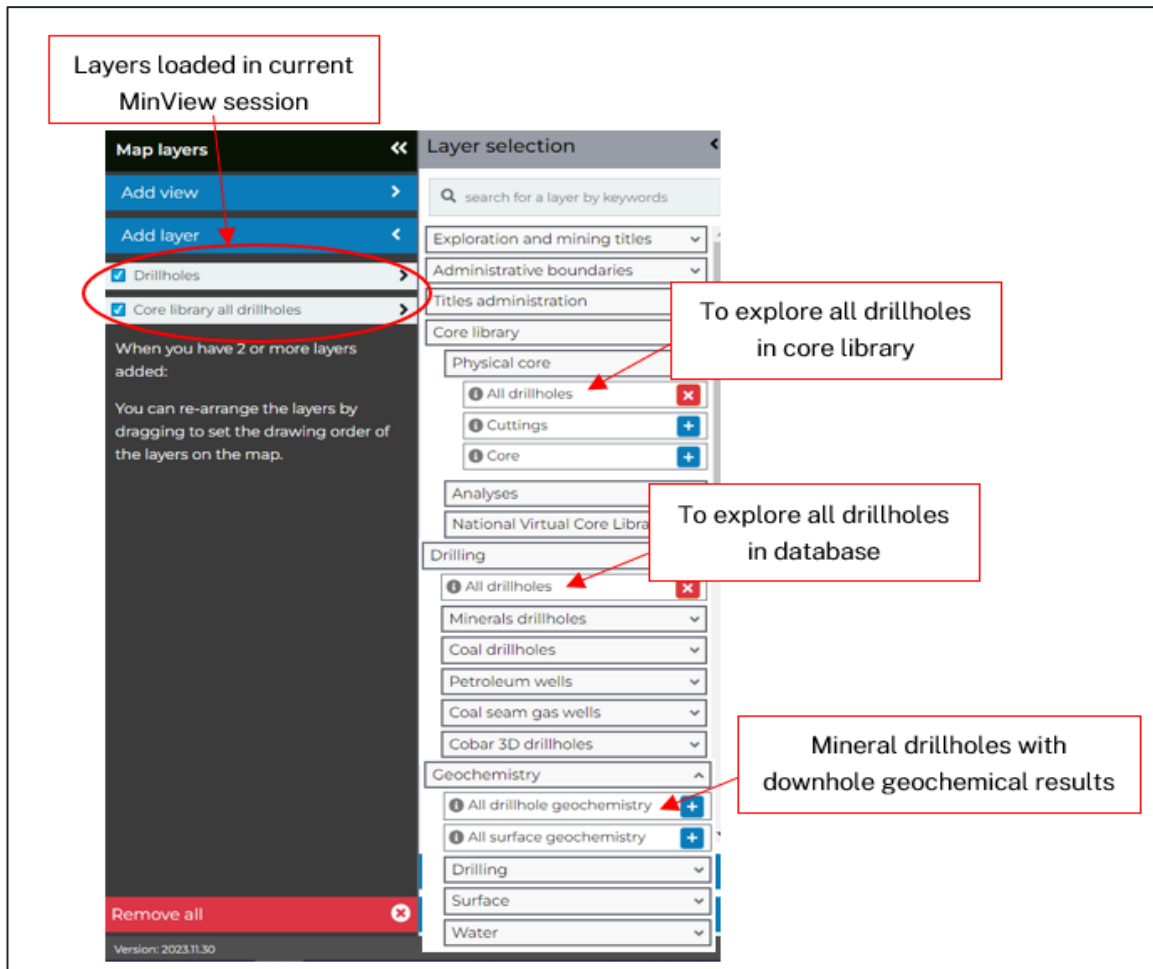
Drilling data is presented in 3 key folders:

1. Drilling – all drillholes in the GSNSW database


2. Core library services – a subset of the drilling database, those that are physically held at core library.

3. Drilling geochemistry – mineral drillholes that have downhole geochemistry.

To search for a particular drillhole it is recommended that the **Drilling > All drillholes** layer be added to the map as this contains all the drillhole records. Alternatively, if you are only interested in drillholes that are stored in a core library, then you should access the layer **Core library services > All drillholes**.



Once a layer has been added, you can search on the drillhole data using either:

- Your area of interest (spatial search)
- Information about the drillhole e.g. Hole name, Project, Title etc (Text search). Click on the Search tools provided at the top right menu bar to open the Search form and follow the instructions. To learn more about search options, please refer to the user manual available from the menu bar 

Search results

The results of your search are presented in a table as shown below. Scroll bars allow you to explore the records and information. Summary reports are available for individual records by clicking the 'Report' button and you can highlight selected records to locate the points on the map. Also, several

fields such as 'title' and 'report' contain hyperlinks to the DIGs system to enable users to open related reports.

Displays number of records

Minimise 98 of maximum 500 results shown

Core library all drillholes

Actions	program	hole_name	gsnswh_drill_id	end_depth	title	reports	year_drilled	gsnswh_drilltype	licence_holder	operator
Report	Iron Duke Mine - IRONDUKE8	MIN_002826	31.5	31.5	PLL1033	R00028468	1964	Diamond	Carpentaria Expl	
Report	Champagne - Ca CHAMPAGNE1	MIN_002817	177.9	177.9	ATOE3347	R00028468	1964	Diamond	Carpentaria Expl	
Report	Champagne - Ca CHAMPAGNE2	MIN_002818	76.5	76.5	ATOE3347	R00028468	1964	Diamond	Carpentaria Expl	
Report	Iron Duke Mine - IRONDUKE1	MIN_002819	54.7	54.7	PLL1033	R00028468	1964	Diamond	Carpentaria Expl	
Report	Iron Duke Mine - IRONDUKE2	MIN_002820	80.2	80.2	ATOE3347	R00028468	1963	Diamond	Carpentaria Expl	
Report	Iron Duke Mine - IRONDUKE3	MIN_002821	91.9	91.9	ATOE3347	R00028468	1964	Diamond	Carpentaria Expl	
Report	Iron Duke Mine - IRONDUKE4	MIN_002822	46.1	46.1	PLL1033	R00028468	1964	Diamond	Carpentaria Expl	
Report	Iron Duke Mine - IRONDUKE5	MIN_002823	48.6	48.6	PLL1033	R00028468, R	1964	Diamond	Carpentaria Expl	
Report	Iron Duke Mine - IRONDUKE6	MIN_002824	34.3	34.3	PLL1033	R00028468	1964	Diamond	Carpentaria Expl	
Report	Iron Duke Mine - IRONDUKE7	MIN_002825	30.3	30.3	PLL1033	R00028468	1964	Diamond	Carpentaria Expl	
Report	Iron Duke Mine - PC001A	MIN_003132	51.4	51.4	PLL1033	R00011839	1968	Diamond	Pacific Copper Li	
Report	Iron Duke Mine - PC005	MIN_003139	46.0	46.0	PLL1033	R00011839	1968	Diamond	Pacific Copper Li	
Report	Iron Duke Mine - PC006	MIN_003140	46.3	46.3	PLL1033	R00011839	1968	Diamond	Pacific Copper Li	
Report	Iron Duke Mine - PC007	MIN_003141	45.7	45.7	PLL1033	R00011839	1968	Diamond	Pacific Copper Li	
Report	Iron Duke Mine - PC007A	MIN_003142	65.7	65.7	PLL1033	R00011839	1968	Diamond	Pacific Copper Li	
Report	Iron Duke Mine - PC008B	MIN_003145	26.9	26.9	PLL1033	R00011839	1968	Diamond	Pacific Copper Li	

Tools to assist in search

Links to DIGs reports

Export result set to CSV

Related drillhole data

The level of drillhole information stored at the core libraries is highly variable. Key fields include:

- Core library
- Material in library
- Interval stored
- Sample test

These fields indicate what material is available and any previous test work undertaken on the drillhole. In addition, approximately 300 drillholes stored at the Londonderry core facility have been scanned using the HyLogger™, providing hyperspectral data and imagery.

More information

- The user guide at minview.geoscience.nsw.gov.au/assets/docs/minview-user-manual-20180901.pdf
- Phone +61 2 4063 6700

- If English isn't your first language, please call 131 450. Ask for an interpreter in your language and the request to be connect to our information centre on +61 2 4063 6700
 - Email minview.info@geoscience.nsw.gov.au
-

© State of New South Wales through Regional NSW 2024. The information contained in this publication is based on knowledge and understanding at the time of writing December 2023. However, because of advances in knowledge, users are reminded of the need to ensure that the information upon which they rely is up to date and to check the currency of the information with the appropriate officer of the Regional NSW or the user's independent adviser.