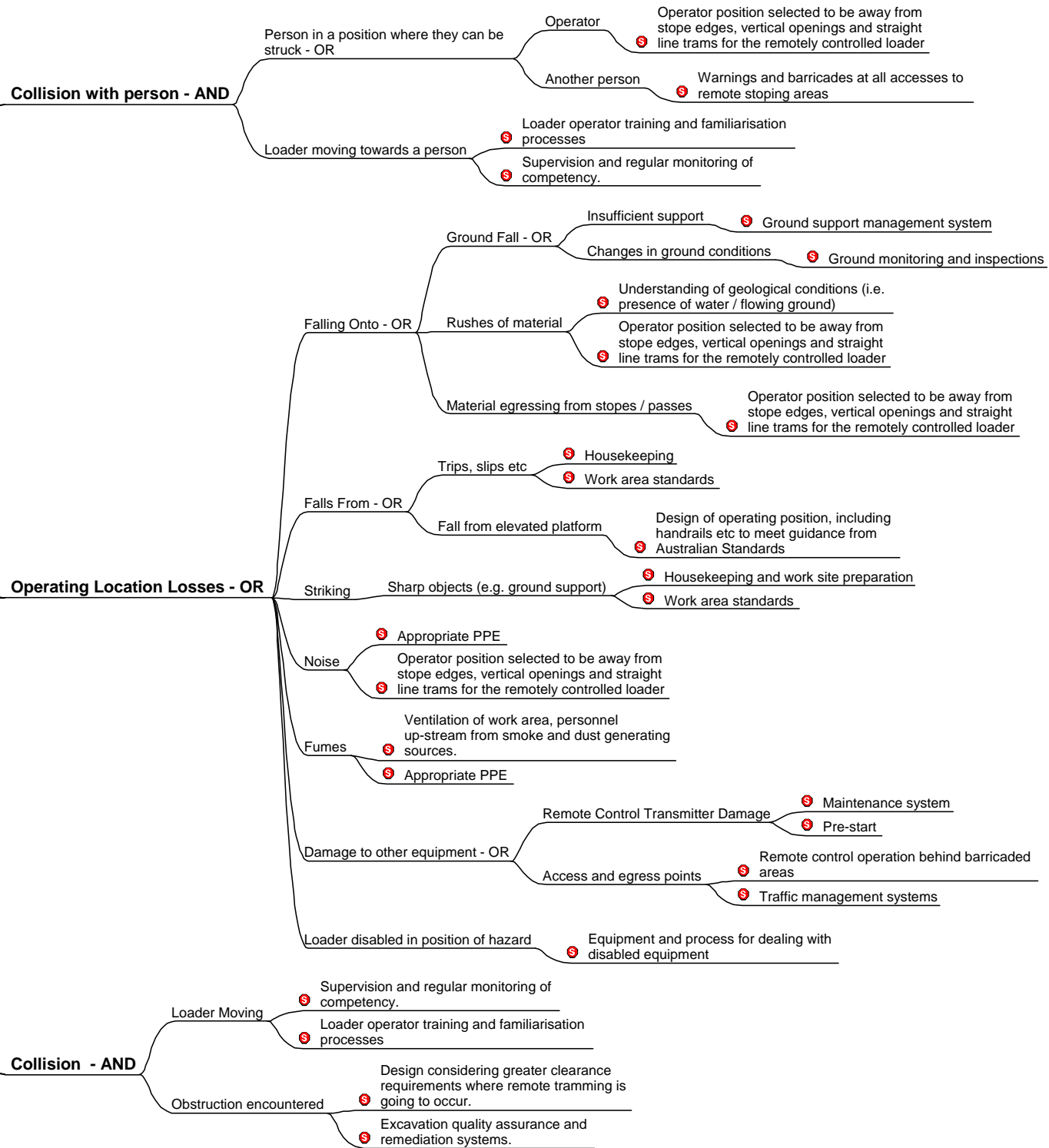


**Line of Site Loss**  
4/07/2005 - v10

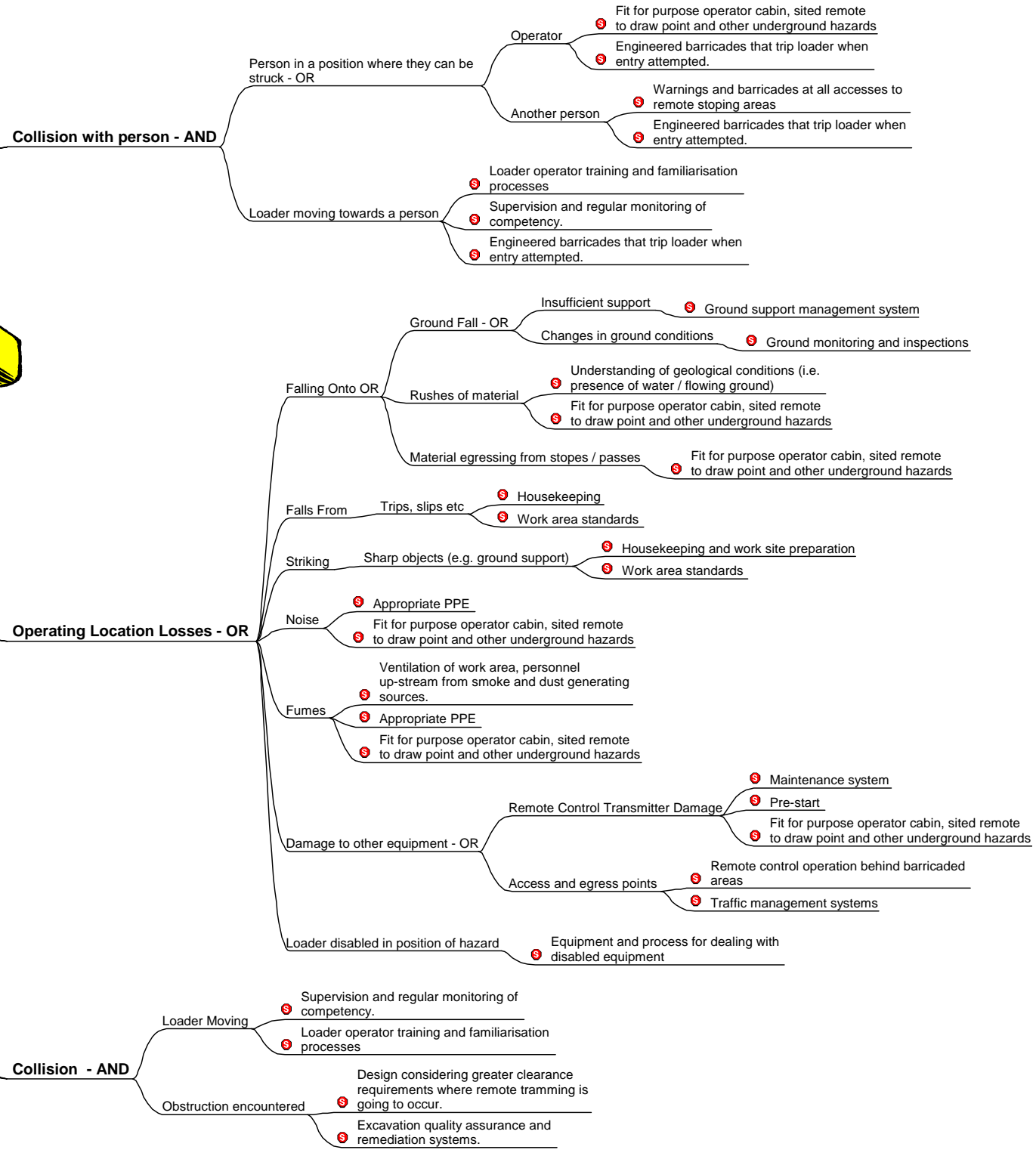


**NOTE**

The term “OR” and “AND” at the end of some of the items on a branch indicates the logic of the subsequent items. So for example, Collisions with a person—AND, means that both a person is in a position where they can be struck AND the loader is moving.

The final item in each branch (preceded with a stop sign) is a control that could be potentially applied to ameliorate the hazards identified in the relevant limb of the tree.

**Tele Remote Loss - OR**  
7/07/2005 - v12



**NOTE**

The term “OR” and “AND” at the end of some of the items on a branch indicates the logic of the subsequent items. So for example, Collisions with a person—AND, means that both a person is in a position where they can be struck AND the loader is moving.

The final item in each branch (preceded with a stop sign) is a control that could be potentially applied to ameliorate the hazards identified in the relevant limb of the tree.